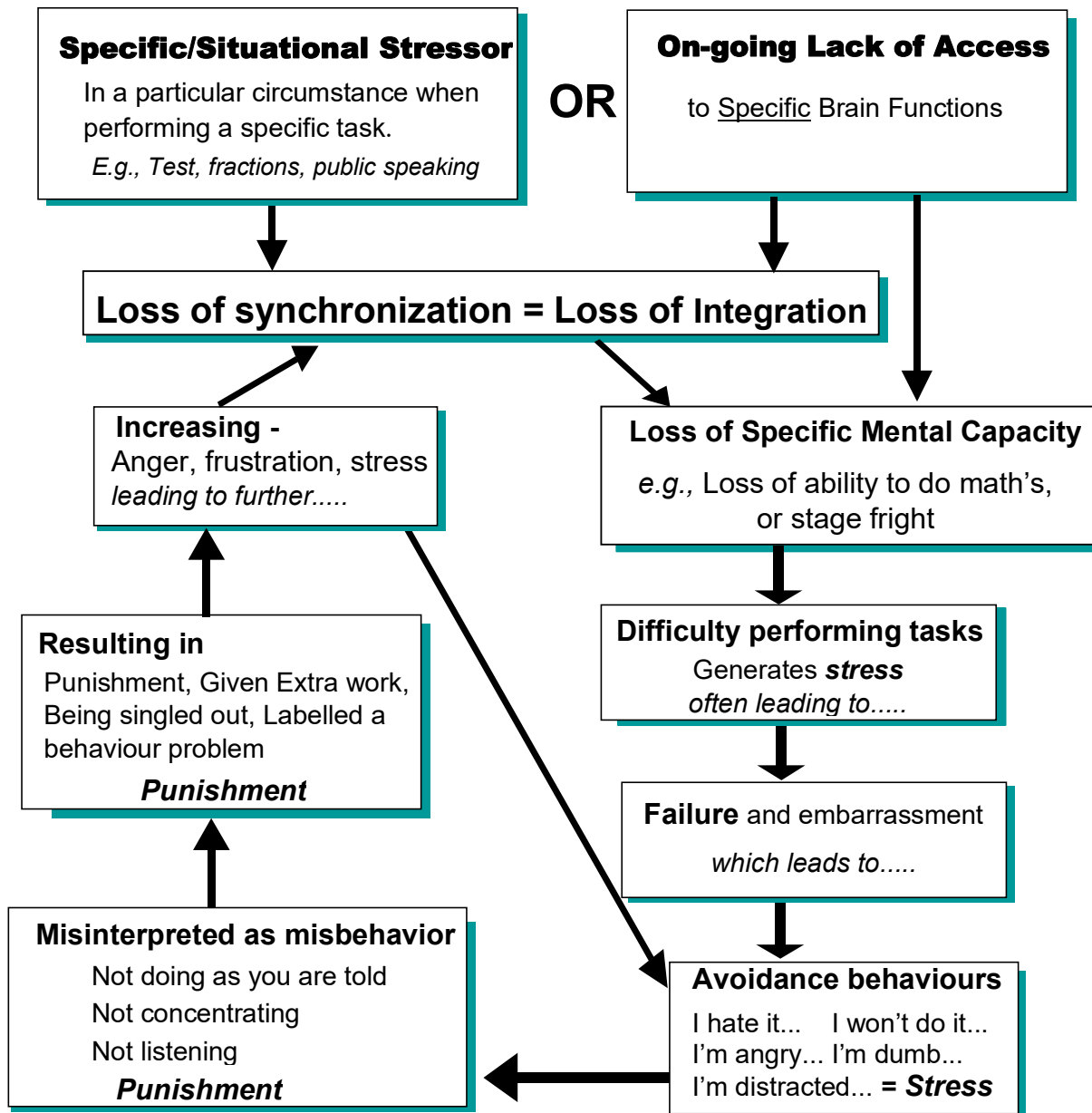


# The Stress Avoidance Cycle

generated by the Loss of Brain Integration



© C Morris 1994, Revised 1998

## Brain Integration

*This is the state of having access to all relevant Gestalt & Logic Lead functions, the subconscious processing centers and the pathways to integrate these processing modules. Integrated brain function requires the synchronization of processing occurring in widely distributed sub systems in many different areas of the brain at the same time. timing or synchronization results in the inability to perform those mental tasks dependent upon integrated brain function.*

*This is termed **Loss of Brain Integration***